



FIE London, England Summer

London, England (Europe)

Quick Facts

Summer I 2024 - London Study & Internship

Dates: May 16 - July 14, 2024

Application Deadline: March 15, 2024

Costs: Approx. \$11,630

Summer II 2024 - London Study & Internship

Dates: June 20 - August 18, 2024

Application Deadline: March 15, 2024

Costs: Approx. \$11,630

Summer 2024 - Pages, Stages, Scenes, and Screens: From Shakespeare to Visual Media

Dates: June 20 - July 28, 2024

Application Deadline: March 15, 2024

Costs: Approx. \$8,100

[Apply Now](#)

Please note that if you see dates or costs for a prior term above, that future terms will have similar dates and costs. We will update info as soon as it becomes available.

The Fall 2024 application cycle will open in January 2024 – you can click [Apply Now](#) then to get started for those terms.

[Click here for FIE London Semester Programs](#)

Program Overview

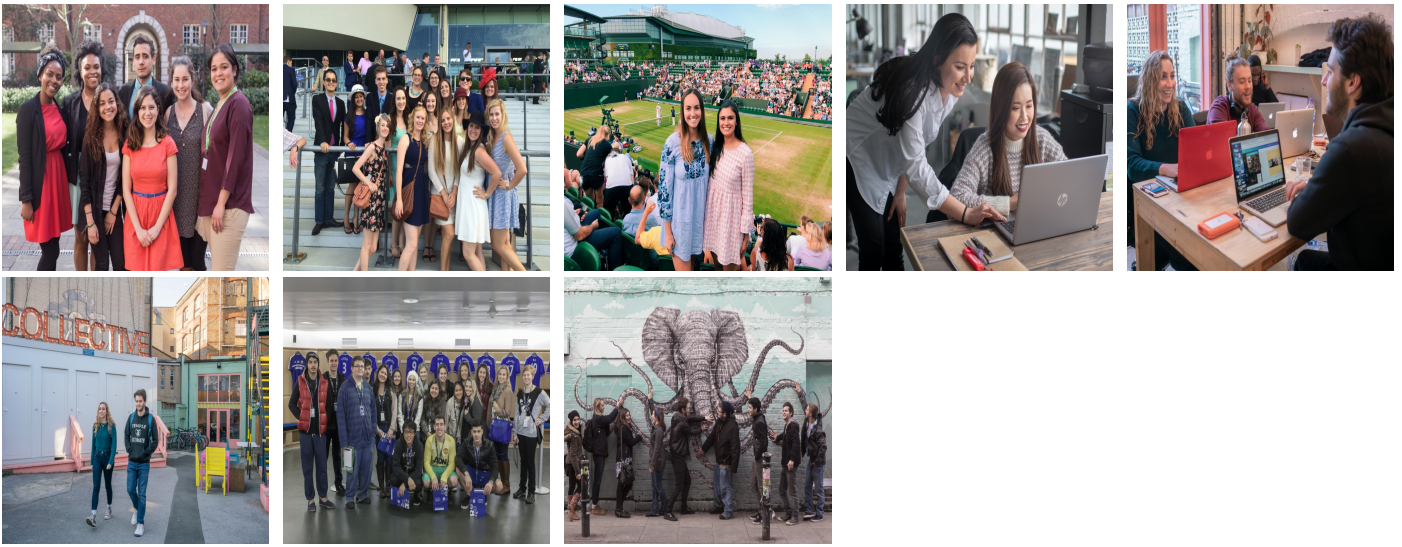
Summer Academics

There are three courses of study that students can participate in during the summer with FIE! Choose the option that works best for your academic and career goals.

- London Summer Study & Internship
 - Take classes and gain intercultural experience through an internship in one of the most vibrant cities in the world! An international internship provides an opportunity to experience working life in another country and challenges pre-conceived notions of cultures and of the professional world. Take FIE's Key Course, [British Life and Cultures](#), as well as the [International Internship Course](#) (IIC). You will begin your internship about a week into the program, splitting each week evenly between class work and placement time. See internship placement areas listed in semester academics above. Available for both Summer Session I & II.
- Pages, Stages, Scenes, and Screens: British Culture from Shakespeare to Modern Media
 - This 5-week summer program explores British culture from Shakespearean times until modern day! Use London as your classroom during co-curricular activities around the city to historical and cultural sites such as Shakespeare's Globe Theatre, or Big Ben and the Houses of Parliament. There are three courses offered to students on the Pages, Stages, Scenes, and Screens program: [British Life and Visual Media](#), [Photojournalism: London through the Lens](#), and [Shakespeare and Elizabethan Literature](#). The students will take 2 of these 3 courses and are asked to list them in order of preference on application. It may be that not all three courses run; hence, courses are determined by student preference
- London Summer Study
 - This 9-week summer program allows you to take intensive courses while using the city of London as your classroom. For the London Summer Study 9 Week program, Session 1 courses are as listed previously: [British Life and Visual Media](#), [Photojournalism: London through the Lens](#), and [Shakespeare and Elizabethan Literature](#) and students will take 2 of 3 courses. Session 2 courses on offer are: [British Politics](#), [Contemporary British Broadcasting](#), [Food, Society & Culture in Britain](#) (additional lab fee required), [Global Marketing](#), and [History of Modern Design](#). Students will take 2 of the 5 courses offered and are asked to list them in order of preference on application. It's possible all five courses will not run; hence, courses are determined by student preference.

Gallery





Contact Program Sponsor and Advisor



College of Staten Island, CUNY
Gonzalo Villena
ELI Director

studyab@csi.cuny.edu
(718) 982-2100

This program is sponsored and administered by the College of Staten Island and the American Association of State Colleges and Universities.

Academics & Program

There are two programs of study that students can participate in during the summer with FIE! Choose the option that works best for your academic and career goals.

- London Summer Study & Internship
- Pages, Stages, Scenes, and Screens: British Culture from Shakespeare to Modern Media

London Summer Study & Internship

The FIE London Summer Internship program is an academic program that includes the FIE Key Course, [British Life and Culture](#), and the [International Internship Course](#). These courses serve as the anchor of the program, offering students an opportunity to place what they are learning in their internship into a larger, contemporary context.

In addition to the traditional classroom experience, learning is supplemented with guest speakers and guided visits to places of both historical and contemporary significance.

FIE's unpaid internship placements, together with classroom seminars and written reflection, form the [International Internship Course](#), or IIC. The IIC seminars allow for discussion, analysis and academic reflection throughout the student's placement experience. Students are assessed on their ability to engage analytically with the internship experience, and are required to compile a portfolio, deliver a presentation and write a final report.

Internship Placement Areas:

- [Business & Entrepreneurship](#)

- [Communications & Journalism](#)
- [Education](#)
- [Environment & Sustainability](#)
- [Entertainment & Performing Arts](#)
- [Fashion, Beauty & Lifestyle](#)
- [Finance & Accountancy](#)
- [Historical & Cultural Organizations](#)
- [Technology & Design](#)
- [Legal & Justice Organizations](#)
- [Politics](#)
- [Public Health & Wellbeing](#)
- [Social Welfare & Non-Profit Organizations](#)

Pages, Stages, Scenes, and Screens: British Culture from Shakespeare to Modern Media

This 5-week summer program explores British culture from Shakespearean times until modern day! Use London as your classroom during co-curricular activities around the city to historical and cultural sites such as Shakespeare's Globe Theatre, or Big Ben and the House of Parliament. You will take two courses of your choice out of the following three: [British Life and Visual Media](#), and [Shakespeare and Elizabethan Literature](#) or Photojournalism: London Through the Lens.

Credits: Summer credits vary

Instructor's Language: English

Student Life & Housing

Student Life

FIE is committed to providing students the opportunity to engage and explore their surroundings and offers optional field trips and study tours, many of which are highly discounted, outside of the academic excursions. Students are also informed of local cultural events and extra-curricular activities. Learn more [here](#).

Housing

FIE's student residences are located in some of the most vibrant and most sought after of London, a short Tube ride or walk away from Foundation House study center. All FIE student housing and study facilities are in the city center Zone 1 locality and well-served by the 24-hour public transport system. Residing in Zone 1 allows you to easily visit and familiarize yourself with all the city has to offer, from museums to clubs and cafes. In South Kensington, students live in fully-furnished converted 19th Century townhouses with one to three roommates. Common living and state-of-the-art kitchen areas in each residence allow students to interact frequently with each other. Student residences in other areas of the city may be purpose built or have more modern amenities. Learn more about the accommodation and check out virtual tours of the students' residences [here](#).

Duration & Costs

Duration

Summer I 2024 - London Study & Internship

Dates: May 16 - July 14, 2024

Application Deadline: March 15, 2024

Costs: Approx. \$11,630

Summer II 2024 - London Study & Internship

Dates: June 20 - August 18, 2024

Application Deadline: March 15, 2024

Costs: Approx. \$11,630

Summer 2024 - Pages, Stages, Scenes, and Screens: From Shakespeare to Visual Media

Dates: June 20 - July 28, 2024

Application Deadline: March 15, 2024

Costs: Approx. \$8,100

Costs

London Summer Internship Session I: \$11,630

London Summer Internship Session II: \$11,630

Pages, Stages, Scenes, and Screens: \$8,100

Please note that if you see dates or costs for a prior term above, the future terms will have similar dates and costs. We will update info as soon as it becomes available.

Costs Included: Tuition and fees, housing, on-site orientation, Zones 1 & 2 London Transport pass for the duration of program, internship placement and support (if selected), medical insurance, various course-related co-curricular activities, and access to a subsidized calendar of extracurricular events.

Costs Not Included: Airfare, meals (residence halls have kitchen facilities), Tier 4 Visa Fee (approx. \$500 for those selecting the internship option)*, optional field excursions, personal expenses.

*Tier 4 Visa Fee is NOT required for Pages, Stages, Scenes, and Screens

All costs, fees, and dates are subject to change without notification. Contact the program sponsor to verify all costs, fees, and dates for this program.

Please refer to your acceptance materials for information on arrival, orientation, and academic calendar. The refund policy is program specific and non-transferable. Refer to your acceptance materials for the comprehensive refund policy or contact the program sponsor.

Scholarship Deadline

Summer Programs: February 15

Scholarship applications must be submitted through the FIE website directly and are due at 11:59 London time on the application deadline day. With time zone differences, for U.S.-based students that is typically 5 to 10 hours earlier than the time listed – check a time zone converter to be sure you know the deadline in your local area. Successful applicants will be notified within one week of the deadline.

Eligibility & Deadlines

Eligibility Requirements

- Students must have sophomore status to be eligible for the program - 2.75 GPA or higher
- Official transcripts
- One letter of recommendation from a teacher who knows the applicant from a classroom setting
- Statement of purpose

- Students must be at least 18 years of age

Entry Requirements: Learn more about the Tier 4 Visa at the UK Border Agency website

Withdraw Policy: 31 days prior to the first day of the program - 100% minus \$400 deposit. 30 days or less prior to the first day of the program - 10% minus \$400 deposit. No refund after program begins.

Application Deadline

March 15

All application materials must be completed through the online application and/or received by Montana State University by this date.

Have you talked with your study abroad advisor about your home institution's application process? Your institution's deadline might be earlier than the CCIS program application deadline. Check now to make sure all of your material is submitted on time!